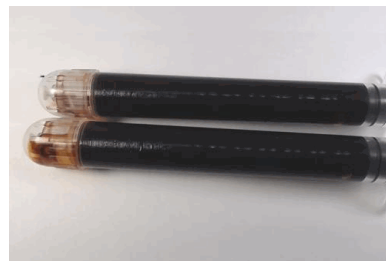


EVIO Labs Medford (pka Kenevir Research)
 540 East Vilas Road, Suite F, Central Point, OR 97502
 541-668-7444 / OLCC 010-1001626980D / www.EVIOLabs.com

ITLO Holdings Lifter 1020.3.69-2.2
Silver Lining Xtracts LLC
 AG-R1049952IHH



Confident Cannabis ID: 2010KR0079.5307

Sample ID: M201627-01

Matrix: Extract/Concentrate

METRC Batch #:

Sampling Method/SOP: SOP.T.20.010

Date Sampled: 10/9/2020 9:00:00AM

Date Accepted: 10/09/20

Harvest/Process Lot ID: 1020.3.69-0

Batch ID: 1020.3.69-2.2

Batch Size (g): 37000g

Unit for Sale:

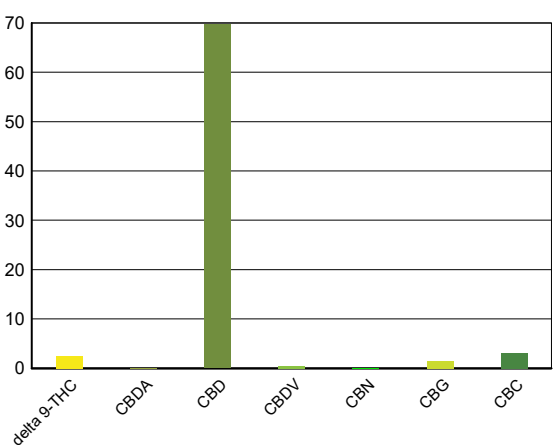
Harvest/Production Date: 10-5-2020

Cannabinoid Analysis

Date/Time Extracted: 10/09/20 09:35

Date/Time Analyzed: 10/10/20 04:58

Analysis Method/SOP: SOP.T.40.020

Cannabinoids	LOQ(%)	mg/g	% weight	Cannabinoid Profile
Total THC ((THCA*0.877)+Δ9THC)		25.20	2.520	
Total CBD ((CBDA*0.877)+CBD)		697.00	69.700	
THCA	0.100	< LOQ	< LOQ	
delta 9-THC	0.100	25.20	2.52	
delta 8-THC	0.100	< LOQ	< LOQ	
THCV	0.100	< LOQ	< LOQ	
CBGA	0.100	< LOQ	< LOQ	
CBDA	0.100	< LOQ	< LOQ	
CBD	0.100	697.00	69.7	
CBDV	0.100	4.19	0.419	
CBN	0.100	< LOQ	< LOQ	
CBG	0.100	14.90	1.49	
CBC	0.100	30.40	3.04	
THCV-A	0.100	< LOQ	< LOQ	
CBDV-A	0.100	< LOQ	< LOQ	
CBCA	0.100	< LOQ	< LOQ	
Sum of tested Cannabinoids	0.100	771.00	77.1	

"Total THC" and "Total CBD" are calculated values and are an Oregon reporting requirement (OAR 333-064-0100). For Cannabinoid analysis, only delta 9-THC, THCA, CBD, CBDA are ORELAP accredited analytes. Cannabinoid values reported for plant matter are dry weight corrected; Oregon Water Activity action level is 0.65Aw and Oregon Moisture Content action level is 15%. Samples above limit will be highlighted RED; FD = Field Duplicate; LOQ = Limit of Quantitation.



Stephanie Moon
 Laboratory Director - 10/15/2020

EVIO Labs Medford (pka Kenevir Research)
 540 East Vilas Road, Suite F, Central Point, OR 97502
 541-668-7444 / OLCC 010-1001626980D / www.EVIOLabs.com

FOR INFORMATIONAL USE ONLY - NOT FOR REGULATORY PURPOSES

ITLO Holdings Lifter 1020.3.69-2.2

Silver Lining Xtracts LLC

AG-R1049952IHH

Sample ID: M201627-01 METRC Batch #:

Matrix: Extract/Concentrate

Date Sampled: 10/09/20 09:00

Date Accepted: 10/09/20

Batch ID: 1020.3.69-2.2

Batch Size: 37000g

Sampling Method/SOP: SOP.T.20.010

Terpene Analysis

Date/Time Extracted: 10/13/20 15:44

Analysis Method/SOP: SOP.T.40.092

Date/Time Analyzed: 10/14/20 09:27

Analyte	LOQ (mg/g)	Mass (mg/g)	Mass (%)	Analyte	LOQ (mg/g)	Mass (mg/g)	Mass (%)
alpha-Pinene	0.500	< LOQ	< LOQ	beta-Pinene	0.500	< LOQ	< LOQ
Camphene	0.500	< LOQ	< LOQ	Sabinene	0.500	< LOQ	< LOQ
Sabinene hydrate	0.500	< LOQ	< LOQ	beta-Myrcene	0.500	< LOQ	< LOQ
p-Mentha-1,5-diene	0.500	< LOQ	< LOQ	(+)-3-Carene	0.500	< LOQ	< LOQ
alpha-Terpinene	0.500	< LOQ	< LOQ	gamma-Terpinene	0.500	< LOQ	< LOQ
Limonene	0.500	< LOQ	< LOQ	Eucalyptol	0.500	< LOQ	< LOQ
Guaiol	0.500	2.32	0.232	Terpinolene	0.500	< LOQ	< LOQ
Linalool	0.500	0.523	0.0523	Camphor	0.500	< LOQ	< LOQ
(+)-Camphor	0.500	< LOQ	< LOQ	(-)-Camphor	0.500	< LOQ	< LOQ
Isopulegol	0.500	< LOQ	< LOQ	Isoborneol	0.500	< LOQ	< LOQ
Borneol	0.500	< LOQ	< LOQ	Hexahydrothymol	0.500	< LOQ	< LOQ
Geraniol	0.500	< LOQ	< LOQ	(+)-Pulegone	0.500	< LOQ	< LOQ
Nerol	0.500	< LOQ	< LOQ	cis-Nerolidol	0.500	< LOQ	< LOQ
trans-Nerolidol	0.500	0.911	0.0911	Geranyl acetate	0.500	< LOQ	< LOQ
alpha-Cedrene	0.500	< LOQ	< LOQ	trans-Caryophyllene	0.500	4.53	0.453
Caryophyllene Oxide	0.500	0.806	0.0806	alpha-Humulene	0.500	2.50	0.25
Valencene	0.500	< LOQ	< LOQ	alpha-Farnesene	0.500	< LOQ	< LOQ
beta-Farnesene	0.500	< LOQ	< LOQ	Cedrol	0.500	< LOQ	< LOQ
alpha-Bisabolol	0.500	5.71	0.571	Fenchone	0.500	< LOQ	< LOQ
Fenchyl Alcohol	0.500	< LOQ	< LOQ	trans, beta- Ocimene	0.500	< LOQ	< LOQ
beta, cis- Ocimene	0.500	< LOQ	< LOQ	Terpineol	0.500	0.542	0.0542
Total (Sum):						17.84	1.78

Analysis performed on GCMS with confirmation ion identification. Terpene analysis is not ORELAP accredited. Results reported as wet weight, or as is. LOQ = Limit of Quantitation. Terpene analysis performed in conjunction with EVIO Labs Portland.



Stephanie Moon
 Laboratory Director - 10/15/2020

Page 2 of 10

EVIO Labs Medford (pka Kenevir Research)
 540 East Vilas Road, Suite F, Central Point, OR 97502
 541-668-7444 / OLCC 010-1001626980D / www.EVIOLabs.com

ITLO Holdings Lifter 1020.3.69-2.2

Silver Lining Xtracts LLC

AG-R1049952IHH

Sample ID: M201627-01

METRC Batch #:

Matrix: Extract/Concentrate

Date Sampled: 10/09/20 09:00

Date Accepted: 10/09/20

Batch ID: 1020.3.69-2.2

Batch Size: 37000g

Sampling Method/SOP: SOP.T.20.010

Pesticides

Date/Time Extracted: 10/09/20 09:42

Date/Time Analyzed: 10/10/2020 7:01:57AM

Analysis Method/SOP: SOP.T.40.050 / SOP.T.40.051

Analyte	LOQ	Action Level	Result	Units	Type
Abamectin	0.250	0.5	< LOQ	ppm	
Acephate	0.200	0.4	< LOQ	ppm	Organophosphate insecticide
Acequinocyl	1.00	2	< LOQ	ppm	
Acetamiprid	0.100	0.2	< LOQ	ppm	Neonicotinoid insecticide
Aldicarb	0.200	0.4	< LOQ	ppm	Carbamate insecticide
Azoxystrobin	0.100	0.2	< LOQ	ppm	
Bifenazate	0.100	0.2	< LOQ	ppm	Unclassified insecticide
Bifenthrin	0.100	0.2	< LOQ	ppm	
Boscalid	0.200	0.4	< LOQ	ppm	Anilide fungicide
Carbaryl	0.100	0.2	< LOQ	ppm	Carbamate insecticide
Carbofuran	0.100	0.2	< LOQ	ppm	Carbamate insecticide
Chlorantraniliprole	0.100	0.2	< LOQ	ppm	Anthranilic diamide insecticide
Chlorfenapyr	0.500	1	< LOQ	ppm	Pyrazole insecticide
Chlorpyrifos	0.100	0.2	< LOQ	ppm	Organophosphate insecticide
Clofentezine	0.100	0.2	< LOQ	ppm	
Cyfluthrin	0.500	1	< LOQ	ppm	
Cypermethrin	0.500	1	< LOQ	ppm	
Daminozide	0.500	1	< LOQ	ppm	
DDVP (Dichlorvos)	0.500	1	< LOQ	ppm	
Diazinon	0.100	0.2	< LOQ	ppm	Organophosphate insecticide
Dimethoate	0.100	0.2	< LOQ	ppm	
Ethoprophos	0.100	0.2	< LOQ	ppm	
Etofenprox	0.200	0.4	< LOQ	ppm	
Etoxazole	0.100	0.2	< LOQ	ppm	Unclassified miticide
Fenoxycarb	0.100	0.2	< LOQ	ppm	
Fenpyroximate	0.200	0.4	< LOQ	ppm	
Fipronil	0.200	0.4	< LOQ	ppm	Pyrazole insecticide
Fonicamid	0.500	1	< LOQ	ppm	Pyridinecarboxamide insecticide
Fludioxonil	0.200	0.4	< LOQ	ppm	non-systemic fungicide
Hexythiazox	0.500	1	< LOQ	ppm	
Imazalil	0.100	0.2	< LOQ	ppm	Azole fungicide
Imidacloprid	0.200	0.4	< LOQ	ppm	Neonicotinoid insecticide
Kresoxim-methyl	0.200	0.4	< LOQ	ppm	
Malathion	0.100	0.2	< LOQ	ppm	
Metalaxyl	0.100	0.2	< LOQ	ppm	
Methiocarb	0.100	0.2	< LOQ	ppm	Carbamate insecticide



Stephanie Moon
 Laboratory Director - 10/15/2020

EVIO Labs Medford (pka Kenevir Research)
 540 East Vilas Road, Suite F, Central Point, OR 97502
 541-668-7444 / OLCC 010-1001626980D / www.EVIOLabs.com

ITLO Holdings Lifter 1020.3.69-2.2

Silver Lining Xtracts LLC

AG-R1049952IHH

Sample ID: M201627-01

METRC Batch #:

Matrix: Extract/Concentrate

Date Sampled: 10/09/20 09:00

Date Accepted: 10/09/20

Batch ID: 1020.3.69-2.2

Batch Size: 37000g

Sampling Method/SOP: SOP.T.20.010

Pesticides

Date/Time Extracted: 10/09/20 09:42

Date/Time Analyzed: 10/10/2020 7:01:57AM

Analysis Method/SOP: SOP.T.40.050 / SOP.T.40.051

Analyte	LOQ	Action Level	Result	Units	Type
Methomyl	0.200	0.4	< LOQ	ppm	Carbamate insecticide
Methyl parathion	0.100	0.2	< LOQ	ppm	
MGK-264	0.100	0.2	< LOQ	ppm	
Myclobutanil	0.100	0.2	< LOQ	ppm	Azole fungicide
Naled	0.250	0.5	< LOQ	ppm	
Oxamyl	0.500	1	< LOQ	ppm	Carbamate insecticide
Paclobutrazol	0.200	0.4	< LOQ	ppm	Azole plant growth regulator
Permethrins	0.100	0.2	< LOQ	ppm	
Phosmet	0.100	0.2	< LOQ	ppm	Organophosphate insecticide
Piperonyl butoxide	1.00	2	< LOQ	ppm	
Prallethrin	0.100	0.2	< LOQ	ppm	
Propiconazole	0.200	0.4	< LOQ	ppm	
Propoxur	0.100	0.2	< LOQ	ppm	Carbamate insecticide
Pyrethrins	0.500	1	< LOQ	ppm	
Pyridaben	0.100	0.2	< LOQ	ppm	Unclassified insecticide
Spinosad	0.100	0.2	< LOQ	ppm	Spinosyn insecticide
Spiromesifen	0.100	0.2	< LOQ	ppm	Keto-enol insecticide
Spirotetramat	0.100	0.2	< LOQ	ppm	Keto-enol insecticide
Spiroxamine	0.200	0.4	< LOQ	ppm	Unclassified fungicide
Tebuconazole	0.200	0.4	< LOQ	ppm	
Thiacloprid	0.100	0.2	< LOQ	ppm	
Thiamethoxam	0.100	0.2	< LOQ	ppm	Neonicotinoid insectide
Trifloxystrobin	0.100	0.2	< LOQ	ppm	Strobin fungicide

Results above the action level fail Oregon state testing requirements and will be highlighted **RED**.

LOQ= Limit of Quantitation; PPM= Parts per million; ND= Not detected; NT= Not tested; AC= Above calibration range. PASS/FAIL status based on OAR 333-007.



Stephanie Moon
 Laboratory Director - 10/15/2020

EVIO Labs Medford (pka Kenevir Research)
540 East Vilas Road, Suite F, Central Point, OR 97502
541-668-7444 / OLCC 010-1001626980D / www.EVIOLabs.com

ITLO Holdings Lifter 1020.3.69-2.2

Silver Lining Xtracts LLC

AG-R1049952IHH

Sample ID: M201627-01 METRC Batch #:

Matrix: Extract/Concentrate

Date Sampled: 10/09/20 09:00

Date Accepted: 10/09/20

Batch ID: 1020.3.69-2.2

Batch Size: 37000g

Sampling Method/SOP: SOP.T.20.010

Residual Solvents

Analyte	LOQ	Action Level	Result	Units
Butanes	2500	5000 ³	< LOQ	ppm
n-Butane	1250	5000	< LOQ	ppm
iso-Butane	1250	5000	< LOQ	ppm
Hexanes	145	290 ⁴	< LOQ	ppm
n-Hexane	145	290	< LOQ	ppm
2-Methylpentane	145	290	< LOQ	ppm
3-Methylpentane	145	290	< LOQ	ppm
2,2-Dimethylbutane	145	290	< LOQ	ppm
2,3-Dimethylbutane	145	290	< LOQ	ppm
Pentanes	2500	5000 ⁵	< LOQ	ppm
n-Pentane	833.33	5000	< LOQ	ppm
iso-Pentane	833.33	5000	< LOQ	ppm
Neopentane	833.33	5000	< LOQ	ppm
Xylenes	1085	2170	< LOQ	ppm
1,2-Dimethylbenzene	271.25	2170	< LOQ	ppm
1,3-Dimethylbenzene	271.25	2170	< LOQ	ppm
1,4-Dimethylbenzene	271.25	2170	< LOQ	ppm
Xylenes MP	1085	2170	< LOQ	ppm
Ethyl benzene	271.25	NA	< LOQ	ppm
2-Propanol (IPA)	2500	5000	< LOQ	ppm
Acetone	2500	5000	< LOQ	ppm
Acetonitrile	205	410	< LOQ	ppm
Benzene	1	2	< LOQ	ppm
Methanol	1500	3000	< LOQ	ppm
Propane	2500	5000	< LOQ	ppm
Toluene	445	890	< LOQ	ppm
Dichloromethane	300	600	< LOQ	ppm
1,4-Dioxane	190	380	< LOQ	ppm
2-Butanol	2500	5000	< LOQ	ppm
2-Ethoxyethanol	80	160	< LOQ	ppm
Cumene	35	70	< LOQ	ppm
Cyclohexane	1940	3880	< LOQ	ppm
Ethyl acetate	2500	5000	< LOQ	ppm
Ethyl ether	2500	5000	< LOQ	ppm
Ethylene glycol	310	620	< LOQ	ppm
Ethylene oxide	25	50	< LOQ	ppm
Heptane	2500	5000	< LOQ	ppm
Isopropyl acetate	2500	5000	< LOQ	ppm
Tetrahydrofuran	360	720	< LOQ	ppm

Date/Time Extracted: 10/13/20 12:55

Date/Time Analyzed: 10/13/20 19:26

Analysis Method/SOP: SOP.T.40.031

3 - Total butanes are calculated as sum of n-butanes (CAS# 106-97-8) and iso-butane (CAS# 75-28-5)

4 - Total hexanes are calculated as sum of n-hexane (CAS# 110-54-3), 2-methylpentane (CAS# 107-83-5), 3-methylpentane (CAS# 96-14-0), 2,2-dimethylbutane (CAS# 75-83-2), 2,3-dimethylbutane (CAS# 79-29-8)

5 - Total pentanes are calculated as sum of n-pentane (CAS# 109-66-0), iso-pentane (CAS# 78-78-4), and neo-pentane (CAS# 463-82-1)

6 - Total xylenes are calculated as 1,2-dimethylbenzene (CAS# 95-47-6), 1,3-dimethylbenzene (CAS# 106-42-3), and 1-4-dimethylbenzene (CAS# 106-42-3)

7 - Ethanol is not regulated under OAR-333-007-0410.

Results above the action level fail Oregon state testing requirements and will be highlighted RED. LOQ=Limit of Quantitation; PPM=Parts per million; ND=Not detected; NT=Not tested; AC=Above calibration range. PASS/FAIL status based on OAR 333-007. Analysis performed in conjunction with EVIO Labs Portland.



Stephanie Moon
Laboratory Director - 10/15/2020

EVIO Labs Medford (pka Kenevir Research)
540 East Vilas Road, Suite F, Central Point, OR 97502
541-668-7444 / OLCC 010-1001626980D / www.EVIOLabs.com

Quality Control

Batch: M20J048 - SOP.T.30.050 Prep for Cannabinoids

Blank(M20J048-BLK1)			Extracted: 10/09/20 09:35		Analyzed: 10/10/20 02:47		
Analyte	Result	LOQ	Recovery Limits	Analyte	Result	LOQ	Recovery Limits
THCA	< LOQ	0.100 (%)	< LOQ	delta 9-THC	< LOQ	0.100 (%)	< LOQ
delta 8-THC	< LOQ	0.100 (%)	< LOQ	THCV-A	< LOQ	0.100 (%)	< LOQ
THCV	< LOQ	0.100 (%)	< LOQ	CBDA	< LOQ	0.100 (%)	< LOQ
CBD	< LOQ	0.100 (%)	< LOQ	CBDV-A	< LOQ	0.100 (%)	< LOQ
CBDV	< LOQ	0.100 (%)	< LOQ	CBG	< LOQ	0.100 (%)	< LOQ
CBGA	< LOQ	0.100 (%)	< LOQ	CBN	< LOQ	0.100 (%)	< LOQ
CBCA	< LOQ	0.100 (%)	< LOQ	CBC	< LOQ	0.100 (%)	< LOQ
Sum of tested Cannabinoid:	< LOQ	0.100 (%)	< LOQ				

LCS(M20J048-BS1)			Extracted: 10/09/20 09:35		Analyzed: 10/10/20 03:04		
Analyte	% Recovery	LOQ	Recovery Limits	Analyte	% Recovery	LOQ	Recovery Limits
THCA	95.7	(%)	70-130	delta 9-THC	96.3	(%)	70-130
THCV	99.0	(%)	70-130	CBDA	96.0	(%)	70-130
CBD	96.9	(%)	70-130	CBG	95.6	(%)	70-130
CBGA	95.1	(%)	70-130	CBN	102	(%)	70-130
CBCA	98.7	(%)	70-130	CBC	96.4	(%)	70-130

Batch: M20J052 - SOP.T.30.060 Pesticide Prep

Blank(M20J052-BLK1)			Extracted: 10/09/20 09:42		Analyzed: 10/09/20 17:43		
Analyte	Result	LOQ	Recovery Limits	Analyte	Result	LOQ	Recovery Limits
Methyl parathion	< LOQ	0.100 (ppm)	< LOQ	MGK-264	< LOQ	0.100 (ppm)	< LOQ
Chlorfenapyr	< LOQ	0.500 (ppm)	< LOQ	Cyfluthrin	< LOQ	0.500 (ppm)	< LOQ
Cypermethrin	< LOQ	0.500 (ppm)	< LOQ	Abamectin	< LOQ	0.250 (ppm)	< LOQ
Acephate	< LOQ	0.200 (ppm)	< LOQ	Acequinocyl	< LOQ	1.00 (ppm)	< LOQ
Acetamiprid	< LOQ	0.100 (ppm)	< LOQ	Aldicarb	< LOQ	0.200 (ppm)	< LOQ
Azoxystrobin	< LOQ	0.100 (ppm)	< LOQ	Bifenazate	< LOQ	0.100 (ppm)	< LOQ
Bifenthrin	< LOQ	0.100 (ppm)	< LOQ	Boscalid	< LOQ	0.200 (ppm)	< LOQ
Carbaryl	< LOQ	0.100 (ppm)	< LOQ	Carbofuran	< LOQ	0.100 (ppm)	< LOQ
Chlorantraniliprole	< LOQ	0.100 (ppm)	< LOQ	Chlorpyrifos	< LOQ	0.100 (ppm)	< LOQ
Clofentezine	< LOQ	0.100 (ppm)	< LOQ	Daminozide	< LOQ	0.500 (ppm)	< LOQ
DDVP (Dichlorvos)	< LOQ	0.500 (ppm)	< LOQ	Diazinon	< LOQ	0.100 (ppm)	< LOQ
Dimethoate	< LOQ	0.100 (ppm)	< LOQ	Ethoprophos	< LOQ	0.100 (ppm)	< LOQ
Etofenprox	< LOQ	0.200 (ppm)	< LOQ	Etoxazole	< LOQ	0.100 (ppm)	< LOQ
Fenoxycarb	< LOQ	0.100 (ppm)	< LOQ	Fenpyroximate	< LOQ	0.200 (ppm)	< LOQ
Fipronil	< LOQ	0.200 (ppm)	< LOQ	Flonicamid	< LOQ	0.500 (ppm)	< LOQ
Fludioxonil	< LOQ	0.200 (ppm)	< LOQ	Hexythiazox	< LOQ	0.500 (ppm)	< LOQ
Imazalil	< LOQ	0.100 (ppm)	< LOQ	Imidacloprid	< LOQ	0.200 (ppm)	< LOQ



Stephanie Moon
Laboratory Director - 10/15/2020

EVIO Labs Medford (pka Kenevir Research)
540 East Vilas Road, Suite F, Central Point, OR 97502
541-668-7444 / OLCC 010-1001626980D / www.EVIOLabs.com

Quality Control

Batch: M20J052 - SOP.T.30.060 Pesticide Prep (Continued)

Blank(M20J052-BLK1)			Extracted: 10/09/20 09:42		Analyzed: 10/10/20 02:54		
Analyte	Result	LOQ	Recovery Limits	Analyte	Result	LOQ	Recovery Limits
Kresoxim-methyl	< LOQ	0.200 (ppm)	< LOQ	Malathion	< LOQ	0.100 (ppm)	< LOQ
Metalaxyl	< LOQ	0.100 (ppm)	< LOQ	Methiocarb	< LOQ	0.100 (ppm)	< LOQ
Methomyl	< LOQ	0.200 (ppm)	< LOQ	Myclobutanil	< LOQ	0.100 (ppm)	< LOQ
Naled	< LOQ	0.250 (ppm)	< LOQ	Oxamyl	< LOQ	0.500 (ppm)	< LOQ
Paclobutrazol	< LOQ	0.200 (ppm)	< LOQ	Permethrins	< LOQ	0.100 (ppm)	< LOQ
Phosmet	< LOQ	0.100 (ppm)	< LOQ	Piperonyl butoxide	< LOQ	1.00 (ppm)	< LOQ
Prallethrin	< LOQ	0.100 (ppm)	< LOQ	Propiconazole	< LOQ	0.200 (ppm)	< LOQ
Propoxur	< LOQ	0.100 (ppm)	< LOQ	Pyridaben	< LOQ	0.100 (ppm)	< LOQ
Pyrethrins	< LOQ	0.500 (ppm)	< LOQ	Spinosad	< LOQ	0.100 (ppm)	< LOQ
Spiromesifen	< LOQ	0.100 (ppm)	< LOQ	Spirotetramat	< LOQ	0.100 (ppm)	< LOQ
Spiroxamine	< LOQ	0.200 (ppm)	< LOQ	Tebuconazole	< LOQ	0.200 (ppm)	< LOQ
Thiacloprid	< LOQ	0.100 (ppm)	< LOQ	Thiamethoxam	< LOQ	0.100 (ppm)	< LOQ
Trifloxystrobin	< LOQ	0.100 (ppm)	< LOQ				

LCS(M20J052-BS1)			Extracted: 10/09/20 09:42		Analyzed: 10/09/20 17:16		
Analyte	% Recovery	LOQ	Recovery Limits	Analyte	% Recovery	LOQ	Recovery Limits
Methyl parathion	90.0	0.100 (ppm)	50-150	MGK-264	91.7	0.100 (ppm)	50-150
Chlorfenapyr	99.1	0.500 (ppm)	50-150	Cyfluthrin	143	0.500 (ppm)	50-150
Cypermethrin	153	0.500 (ppm)	50-150	Abamectin	106	0.250 (ppm)	50-150
Acephate	156	0.200 (ppm)	50-150	Acequinocyl	85.6	1.00 (ppm)	50-150
Acetamiprid	73.3	0.100 (ppm)	50-150	Aldicarb	161	0.200 (ppm)	50-150
Azoxystrobin	58.7	0.100 (ppm)	50-150	Bifenazate	86.9	0.100 (ppm)	50-150
Bifenthrin	82.9	0.100 (ppm)	50-150	Boscalid	105	0.200 (ppm)	50-150
Carbaryl	134	0.100 (ppm)	50-150	Carbofuran	57.2	0.100 (ppm)	50-150
Chlorantraniliprole	69.6	0.100 (ppm)	50-150	Chlorpyrifos	110	0.100 (ppm)	50-150
Clofentezine	131	0.100 (ppm)	50-150	Daminozide	154	0.500 (ppm)	50-150
DDVP (Dichlorvos)	107	0.500 (ppm)	50-150	Diazinon	135	0.100 (ppm)	50-150
Dimethoate	163	0.100 (ppm)	50-150	Ethoprophos	90.9	0.100 (ppm)	50-150
Etofenprox	135	0.200 (ppm)	50-150	Etoxazole	74.0	0.100 (ppm)	50-150
Fenoxycarb	77.2	0.100 (ppm)	50-150	Fenpyroximate	108	0.200 (ppm)	50-150
Fipronil	45.7	0.200 (ppm)	50-150	Flonicamid	65.3	0.500 (ppm)	50-150
Fludioxonil	55.1	0.200 (ppm)	50-150	Hexythiazox	62.3	0.500 (ppm)	50-150
Imazalil	82.8	0.100 (ppm)	50-150	Imidacloprid	58.5	0.200 (ppm)	50-150
Kresoxim-methyl	79.3	0.200 (ppm)	50-150	Malathion	164	0.100 (ppm)	50-150
Metalaxyl	88.7	0.100 (ppm)	50-150	Methiocarb	192	0.100 (ppm)	50-150
Methomyl	132	0.200 (ppm)	50-150	Myclobutanil	78.8	0.100 (ppm)	50-150
Naled	161	0.250 (ppm)	50-150	Oxamyl	149	0.500 (ppm)	50-150



Stephanie Moon
Laboratory Director - 10/15/2020

EVIO Labs Medford (pka Kenevir Research)
540 East Vilas Road, Suite F, Central Point, OR 97502
541-668-7444 / OLCC 010-1001626980D / www.EVIOLabs.com

Quality Control

Batch: M20J052 - SOP.T.30.060 Pesticide Prep (Continued)

LCS(M20J052-BS1)			Extracted: 10/09/20 09:42		Analyzed: 10/10/20 03:25		
Analyte	% Recovery	LOQ	Recovery Limits	Analyte	% Recovery	LOQ	Recovery Limits
Paclbutrazol	155	0.200 (ppm)	50-150	Permethrins		0.100 (ppm)	50-150
Phosmet	125	0.100 (ppm)	50-150	Piperonyl butoxide	91.2	1.00 (ppm)	50-150
Prallethrin	103	0.100 (ppm)	50-150	Propiconazole	160	0.200 (ppm)	50-150
Propoxur	85.3	0.100 (ppm)	50-150	Pyridaben	72.4	0.100 (ppm)	50-150
Pyrethrins	224	0.500 (ppm)	50-150	Spinosad	50.8	0.100 (ppm)	50-150
Spiromesifen	111	0.100 (ppm)	50-150	Spirotetramat	113	0.100 (ppm)	50-150
Spiroxamine	157	0.200 (ppm)	50-150	Tebuconazole	155	0.200 (ppm)	50-150
Thiacloprid	211	0.100 (ppm)	50-150	Thiamethoxam	61.3	0.100 (ppm)	50-150
Trifloxystrobin	86.0	0.100 (ppm)	50-150				

Batch: M20J070 - SOP.T.40.031 Solvents

Blank(M20J070-BLK1)			Extracted: 10/13/20 12:55		Analyzed: 10/13/20 16:35		
Analyte	Result	LOQ	Recovery Limits	Analyte	Result	LOQ	Recovery Limits
Butanes	< LOQ	2500 (ppm)	< LOQ	n-Butane	< LOQ	1250 (ppm)	< LOQ
iso-Butane	< LOQ	1250 (ppm)	< LOQ	Hexanes	< LOQ	145 (ppm)	< LOQ
n-Hexane	< LOQ	145 (ppm)	< LOQ	2-Methylpentane	< LOQ	145 (ppm)	< LOQ
3-Methylpentane	< LOQ	145 (ppm)	< LOQ	2,2-Dimethylbutane	< LOQ	145 (ppm)	< LOQ
2,3-Dimethylbutane	< LOQ	145 (ppm)	< LOQ	Pentanes	< LOQ	2500 (ppm)	< LOQ
n-Pentane	< LOQ	833.33 (ppm)	< LOQ	iso-Pentane	< LOQ	833.33 (ppm)	< LOQ
Neopentane	< LOQ	833.33 (ppm)	< LOQ	Xylenes	< LOQ	1085 (ppm)	< LOQ
1,2-Dimethylbenzene	< LOQ	271.25 (ppm)	< LOQ	1,3-Dimethylbenzene	< LOQ	271.25 (ppm)	< LOQ
1,4-Dimethylbenzene	< LOQ	271.25 (ppm)	< LOQ	Xylenes MP	< LOQ	1085 (ppm)	< LOQ
Ethyl benzene	< LOQ	271.25 (ppm)	< LOQ	2-Propanol (IPA)	< LOQ	2500 (ppm)	< LOQ
Acetone	< LOQ	2500 (ppm)	< LOQ	Acetonitrile	< LOQ	205 (ppm)	< LOQ
Benzene	< LOQ	1 (ppm)	< LOQ	Methanol	< LOQ	1500 (ppm)	< LOQ
Propane	< LOQ	2500 (ppm)	< LOQ	Toluene	< LOQ	445 (ppm)	< LOQ
Dichloromethane	< LOQ	300 (ppm)	< LOQ	1,4-Dioxane	< LOQ	190 (ppm)	< LOQ
2-Butanol	< LOQ	2500 (ppm)	< LOQ	2-Ethoxyethanol	< LOQ	80 (ppm)	< LOQ
Cumene	< LOQ	35 (ppm)	< LOQ	Cyclohexane	< LOQ	1940 (ppm)	< LOQ
Ethyl acetate	< LOQ	2500 (ppm)	< LOQ	Ethyl ether	< LOQ	2500 (ppm)	< LOQ
Ethylene glycol	< LOQ	310 (ppm)	< LOQ	Ethylene oxide	< LOQ	25 (ppm)	< LOQ
Heptane	< LOQ	2500 (ppm)	< LOQ	Isopropyl acetate	< LOQ	2500 (ppm)	< LOQ
Tetrahydrofuran	< LOQ	360 (ppm)	< LOQ				

LCS(M20J070-BS1)			Extracted: 10/13/20 12:55		Analyzed: 10/13/20 17:04		
Analyte	% Recovery	LOQ	Recovery Limits	Analyte	% Recovery	LOQ	Recovery Limits
Butanes		2500 (ppm)	0-200	n-Butane	90.8	1250 (ppm)	50-150



Stephanie Moon
Laboratory Director - 10/15/2020

EVIO Labs Medford (pka Kenevir Research)
540 East Vilas Road, Suite F, Central Point, OR 97502
541-668-7444 / OLCC 010-1001626980D / www.EVIOLabs.com

Quality Control

Batch: M20J070 - SOP.T.40.031 Solvents (Continued)

LCS(M20J070-BS1)			Extracted: 10/13/20 12:55		Analyzed: 10/13/20 17:04		
Analyte	% Recovery	LOQ	Recovery Limits	Analyte	% Recovery	LOQ	Recovery Limits
iso-Butane	92.2	1250 (ppm)	50-150	Hexanes		145 (ppm)	0-200
n-Hexane	109	145 (ppm)	70-130	2-Methylpentane	107	145 (ppm)	70-130
3-Methylpentane	115	145 (ppm)	70-130	2,2-Dimethylbutane	110	145 (ppm)	70-130
2,3-Dimethylbutane	105	145 (ppm)	70-130	Pentanes		2500 (ppm)	0-200
n-Pentane	94.8	833.33 (ppm)	70-130	iso-Pentane	90.1	833.33 (ppm)	70-130
Neopentane	99.6	833.33 (ppm)	50-150	Xylenes		1085 (ppm)	0-200
1,2-Dimethylbenzene	85.5	271.25 (ppm)	70-130	1,3-Dimethylbenzene	86.0	271.25 (ppm)	70-130
1,4-Dimethylbenzene	86.6	271.25 (ppm)	70-130	Xylenes MP		1085 (ppm)	0-200
Ethyl benzene	77.5	271.25 (ppm)	70-130	2-Propanol (IPA)	91.9	2500 (ppm)	70-130
Acetone	103	2500 (ppm)	70-130	Acetonitrile	97.6	205 (ppm)	70-130
Benzene	86.1	1 (ppm)	70-130	Methanol	105	1500 (ppm)	70-130
Propane	108	2500 (ppm)	50-150	Toluene	90.6	445 (ppm)	70-130
Dichloromethane	107	300 (ppm)	70-130	1,4-Dioxane	98.0	190 (ppm)	70-130
2-Butanol	103	2500 (ppm)	70-130	2-Ethoxyethanol	83.7	80 (ppm)	70-130
Cumene	93.1	35 (ppm)	50-150	Cyclohexane	87.2	1940 (ppm)	70-130
Ethyl acetate	96.6	2500 (ppm)	70-130	Ethyl ether	89.7	2500 (ppm)	70-130
Ethylene glycol	96.0	310 (ppm)	70-130	Ethylene oxide	109	25 (ppm)	50-150
Heptane	93.2	2500 (ppm)	70-130	Isopropyl acetate	99.7	2500 (ppm)	70-130
Tetrahydrofuran	110	360 (ppm)	70-130				

Batch: P20J052 - SOP.T.40.092 PDX Terpenoid Analysis via GC-MS

Blank(P20J052-BLK1)			Extracted: 10/13/20 15:44		Analyzed: 10/14/20 09:27		
Analyte	Result	LOQ	Recovery Limits	Analyte	Result	LOQ	Recovery Limits
alpha-Pinene	< LOQ	0.200 (mg/g)	< LOQ	beta-Pinene	< LOQ	0.200 (mg/g)	< LOQ
Camphene	< LOQ	0.200 (mg/g)	< LOQ	Sabinene	< LOQ	0.200 (mg/g)	< LOQ
Sabinene hydrate	< LOQ	0.200 (mg/g)	< LOQ	beta-Myrcene	< LOQ	0.200 (mg/g)	< LOQ
p-Mentha-1,5-diene	< LOQ	0.200 (mg/g)	< LOQ	(+)-3-Carene	< LOQ	0.200 (mg/g)	< LOQ
alpha-Terpinene	< LOQ	0.200 (mg/g)	< LOQ	gamma-Terpinene	< LOQ	0.200 (mg/g)	< LOQ
Limonene	< LOQ	0.200 (mg/g)	< LOQ	Eucalyptol	< LOQ	0.200 (mg/g)	< LOQ
Guaiol	< LOQ	0.200 (mg/g)	< LOQ	Terpinolene	< LOQ	0.200 (mg/g)	< LOQ
Linalool	< LOQ	0.200 (mg/g)	< LOQ	Camphor	< LOQ	0.200 (mg/g)	< LOQ
(+)-Camphor	< LOQ	0.200 (mg/g)	< LOQ	(-)-Camphor	< LOQ	0.200 (mg/g)	< LOQ
Isopulegol	< LOQ	0.200 (mg/g)	< LOQ	Isoborneol	< LOQ	0.200 (mg/g)	< LOQ
Borneol	< LOQ	0.200 (mg/g)	< LOQ	Hexahydrothymol	< LOQ	0.200 (mg/g)	< LOQ
Geraniol	< LOQ	0.200 (mg/g)	< LOQ	(+)-Pulegone	< LOQ	0.200 (mg/g)	< LOQ
Nerol	< LOQ	0.200 (mg/g)	< LOQ	cis-Nerolidol	< LOQ	0.200 (mg/g)	< LOQ
trans-Nerolidol	< LOQ	0.200 (mg/g)	< LOQ	Geranyl acetate	< LOQ	0.200 (mg/g)	< LOQ



Stephanie Moon
Laboratory Director - 10/15/2020

Page 9 of 10

EVIO Labs Medford (pka Kenevir Research)
 540 East Vilas Road, Suite F, Central Point, OR 97502
 541-668-7444 / OLCC 010-1001626980D / www.EVIOLabs.com

Quality Control

Batch: P20J052 - SOP.T.40.092 PDX Terpenoid Analysis via GC-MS (Continued)

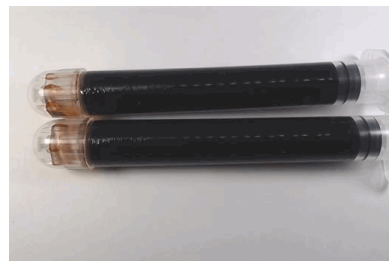
Blank(P20J052-BLK1)			Extracted: 10/13/20 15:44		Analyzed: 10/14/20 09:27		
Analyte	Result	LOQ	Recovery Limits	Analyte	Result	LOQ	Recovery Limits
alpha-Cedrene	< LOQ	0.200 (mg/g)	< LOQ	trans-Caryophyllene	< LOQ	0.200 (mg/g)	< LOQ
Caryophyllene Oxide	< LOQ	0.200 (mg/g)	< LOQ	alpha-Humulene	< LOQ	0.200 (mg/g)	< LOQ
Valencene	< LOQ	0.200 (mg/g)	< LOQ	alpha-Farnesene	< LOQ	0.200 (mg/g)	< LOQ
beta-Farnesene	< LOQ	0.200 (mg/g)	< LOQ	Cedrol	< LOQ	0.200 (mg/g)	< LOQ
alpha-Bisabolol	< LOQ	0.200 (mg/g)	< LOQ	Fenchone	< LOQ	0.200 (mg/g)	< LOQ
Fenchyl Alcohol	< LOQ	0.200 (mg/g)	< LOQ	trans, beta- Ocimene	< LOQ	0.200 (mg/g)	< LOQ
beta, cis- Ocimene	< LOQ	0.200 (mg/g)	< LOQ	Terpineol	< LOQ	0.200 (mg/g)	< LOQ



Stephanie Moon
 Laboratory Director - 10/15/2020

EVIO Labs Medford (pka Kenevir Research)
 540 East Vilas Road, Suite F, Central Point, OR 97502
 541-668-7444 / OLCC 010-1001626980D / www.EVIOLabs.com

ITLO Holdings Lifter 1020.3.69-2.2 FD
Silver Lining Xtracts LLC
 AG-R1049952IHH



Confident Cannabis ID: 2010KR0079.5308

Sample ID: M201627-02

Matrix: Extract/Concentrate

METRC Batch #:

Sampling Method/SOP: SOP.T.20.010

Date Sampled: 10/9/2020 9:00:00AM

Date Accepted: 10/09/20

Harvest/Process Lot ID: 1020.3.69-0

Batch ID: 1020.3.69-2.2

Batch Size (g): 37000g

Unit for Sale:

Harvest/Production Date: 10-5-2020

Cannabinoid Analysis

Date/Time Extracted: 10/09/20 09:35
 Date/Time Analyzed: 10/10/20 05:14

Analysis Method/SOP: SOP.T.40.020

Cannabinoids	LOQ(%)	mg/g	% weight	Cannabinoid Profile
Total THC ((THCA*0.877)+Δ9THC)		25.30	2.530	
Total CBD ((CBDA*0.877)+CBD)		697.00	69.700	
THCA	0.100	< LOQ	< LOQ	
delta 9-THC	0.100	25.30	2.53	
delta 8-THC	0.100	< LOQ	< LOQ	
THCV	0.100	< LOQ	< LOQ	
CBGA	0.100	< LOQ	< LOQ	
CBDA	0.100	< LOQ	< LOQ	
CBD	0.100	697.00	69.7	
CBDV	0.100	4.23	0.423	
CBN	0.100	< LOQ	< LOQ	
CBG	0.100	14.80	1.48	
CBC	0.100	30.40	3.04	
THCV-A	0.100	< LOQ	< LOQ	
CBDV-A	0.100	< LOQ	< LOQ	
CBCA	0.100	< LOQ	< LOQ	
Sum of tested Cannabinoids	0.100	772.00	77.2	

"Total THC" and "Total CBD" are calculated values and are an Oregon reporting requirement (OAR 333-064-0100). For Cannabinoid analysis, only delta 9-THC, THCA, CBD, CBDA are ORELAP accredited analytes. Cannabinoid values reported for plant matter are dry weight corrected; Oregon Water Activity action level is 0.65Aw and Oregon Moisture Content action level is 15%. Samples above limit will be highlighted RED; FD = Field Duplicate; LOQ = Limit of Quantitation.

Stephanie Moon
 Laboratory Director - 10/15/2020

EVIO Labs Medford (pka Kenevir Research)
 540 East Vilas Road, Suite F, Central Point, OR 97502
 541-668-7444 / OLCC 010-1001626980D / www.EVIOLabs.com

FOR INFORMATIONAL USE ONLY - NOT FOR REGULATORY PURPOSES

ITLO Holdings Lifter 1020.3.69-2.2 FD

Silver Lining Xtracts LLC

AG-R1049952IHH

Sample ID: M201627-02 METRC Batch #:

Matrix: Extract/Concentrate

Date Sampled: 10/09/20 09:00

Date Accepted: 10/09/20

Batch ID: 1020.3.69-2.2

Batch Size: 37000g

Sampling Method/SOP: SOP.T.20.010

Terpene Analysis

Date/Time Extracted: 10/13/20 15:44

Analysis Method/SOP: SOP.T.40.092

Date/Time Analyzed: 10/14/20 09:27

Analyte	LOQ (mg/g)	Mass (mg/g)	Mass (%)	Analyte	LOQ (mg/g)	Mass (mg/g)	Mass (%)
alpha-Pinene	0.500	< LOQ	< LOQ	beta-Pinene	0.500	< LOQ	< LOQ
Camphene	0.500	< LOQ	< LOQ	Sabinene	0.500	< LOQ	< LOQ
Sabinene hydrate	0.500	< LOQ	< LOQ	beta-Myrcene	0.500	< LOQ	< LOQ
p-Mentha-1,5-diene	0.500	< LOQ	< LOQ	(+)-3-Carene	0.500	< LOQ	< LOQ
alpha-Terpinene	0.500	< LOQ	< LOQ	gamma-Terpinene	0.500	< LOQ	< LOQ
Limonene	0.500	< LOQ	< LOQ	Eucalyptol	0.500	< LOQ	< LOQ
Guaiol	0.500	2.29	0.229	Terpinolene	0.500	< LOQ	< LOQ
Linalool	0.500	0.524	0.0524	Camphor	0.500	< LOQ	< LOQ
(+)-Camphor	0.500	< LOQ	< LOQ	(-)-Camphor	0.500	< LOQ	< LOQ
Isopulegol	0.500	< LOQ	< LOQ	Isoborneol	0.500	< LOQ	< LOQ
Borneol	0.500	< LOQ	< LOQ	Hexahydrothymol	0.500	< LOQ	< LOQ
Geraniol	0.500	< LOQ	< LOQ	(+)-Pulegone	0.500	< LOQ	< LOQ
Nerol	0.500	< LOQ	< LOQ	cis-Nerolidol	0.500	< LOQ	< LOQ
trans-Nerolidol	0.500	0.883	0.0883	Geranyl acetate	0.500	< LOQ	< LOQ
alpha-Cedrene	0.500	< LOQ	< LOQ	trans-Caryophyllene	0.500	4.47	0.447
Caryophyllene Oxide	0.500	0.784	0.0784	alpha-Humulene	0.500	2.51	0.251
Valencene	0.500	< LOQ	< LOQ	alpha-Farnesene	0.500	< LOQ	< LOQ
beta-Farnesene	0.500	< LOQ	< LOQ	Cedrol	0.500	< LOQ	< LOQ
alpha-Bisabolol	0.500	5.89	0.589	Fenchone	0.500	< LOQ	< LOQ
Fenchyl Alcohol	0.500	< LOQ	< LOQ	trans, beta- Ocimene	0.500	< LOQ	< LOQ
beta, cis- Ocimene	0.500	< LOQ	< LOQ	Terpineol	0.500	0.544	0.0544
Total (Sum):						17.90	1.79

Analysis performed on GCMS with confirmation ion identification. Terpene analysis is not ORELAP accredited. Results reported as wet weight, or as is. LOQ = Limit of Quantitation. Terpene analysis performed in conjunction with EVIO Labs Portland.



Stephanie Moon
 Laboratory Director - 10/15/2020

EVIO Labs Medford (pka Kenevir Research)
 540 East Vilas Road, Suite F, Central Point, OR 97502
 541-668-7444 / OLCC 010-1001626980D / www.EVIOLabs.com

ITLO Holdings Lifter 1020.3.69-2.2 FD

Silver Lining Xtracts LLC

AG-R1049952IHH

Sample ID: M201627-02

METRC Batch #:

Matrix: Extract/Concentrate

Date Sampled: 10/09/20 09:00

Date Accepted: 10/09/20

Batch ID: 1020.3.69-2.2

Batch Size: 37000g

Sampling Method/SOP: SOP.T.20.010

Pesticides

Date/Time Extracted: 10/09/20 09:42

Date/Time Analyzed: 10/10/2020 7:32:52AM

Analysis Method/SOP: SOP.T.40.050 / SOP.T.40.051

Analyte	LOQ	Action Level	Result	Units	Type
Abamectin	0.250	0.5	< LOQ	ppm	
Acephate	0.200	0.4	< LOQ	ppm	Organophosphate insecticide
Acequinocyl	1.00	2	< LOQ	ppm	
Acetamiprid	0.100	0.2	< LOQ	ppm	Neonicotinoid insecticide
Aldicarb	0.200	0.4	< LOQ	ppm	Carbamate insecticide
Azoxystrobin	0.100	0.2	< LOQ	ppm	
Bifenazate	0.100	0.2	< LOQ	ppm	Unclassified insecticide
Bifenthrin	0.100	0.2	< LOQ	ppm	
Boscalid	0.200	0.4	< LOQ	ppm	Anilide fungicide
Carbaryl	0.100	0.2	< LOQ	ppm	Carbamate insecticide
Carbofuran	0.100	0.2	< LOQ	ppm	Carbamate insecticide
Chlorantraniliprole	0.100	0.2	< LOQ	ppm	Anthranilic diamide insecticide
Chlorfenapyr	0.500	1	< LOQ	ppm	Pyrazole insecticide
Chlorpyrifos	0.100	0.2	< LOQ	ppm	Organophosphate insecticide
Clofentezine	0.100	0.2	< LOQ	ppm	
Cyfluthrin	0.500	1	< LOQ	ppm	
Cypermethrin	0.500	1	< LOQ	ppm	
Daminozide	0.500	1	< LOQ	ppm	
DDVP (Dichlorvos)	0.500	1	< LOQ	ppm	
Diazinon	0.100	0.2	< LOQ	ppm	Organophosphate insecticide
Dimethoate	0.100	0.2	< LOQ	ppm	
Ethoprophos	0.100	0.2	< LOQ	ppm	
Etofenprox	0.200	0.4	< LOQ	ppm	
Etoxazole	0.100	0.2	< LOQ	ppm	Unclassified miticide
Fenoxycarb	0.100	0.2	< LOQ	ppm	
Fenpyroximate	0.200	0.4	< LOQ	ppm	
Fipronil	0.200	0.4	< LOQ	ppm	Pyrazole insecticide
Fonicamid	0.500	1	< LOQ	ppm	Pyridinecarboxamide insecticide
Fludioxonil	0.200	0.4	< LOQ	ppm	non-systemic fungicide
Hexythiazox	0.500	1	< LOQ	ppm	
Imazalil	0.100	0.2	< LOQ	ppm	Azole fungicide
Imidacloprid	0.200	0.4	< LOQ	ppm	Neonicotinoid insecticide
Kresoxim-methyl	0.200	0.4	< LOQ	ppm	
Malathion	0.100	0.2	< LOQ	ppm	
Metalaxyl	0.100	0.2	< LOQ	ppm	
Methiocarb	0.100	0.2	< LOQ	ppm	Carbamate insecticide



Stephanie Moon
 Laboratory Director - 10/15/2020

Page 3 of 10

EVIO Labs Medford (pka Kenevir Research)
540 East Vilas Road, Suite F, Central Point, OR 97502
541-668-7444 / OLCC 010-1001626980D / www.EVIOLabs.com

ITLO Holdings Lifter 1020.3.69-2.2 FD

Silver Lining Xtracts LLC

AG-R1049952IHH

Sample ID: M201627-02

METRC Batch #:

Matrix: Extract/Concentrate

Date Sampled: 10/09/20 09:00

Date Accepted: 10/09/20

Batch ID: 1020.3.69-2.2

Batch Size: 37000g

Sampling Method/SOP: SOP.T.20.010

Pesticides

Date/Time Extracted: 10/09/20 09:42

Date/Time Analyzed: 10/10/2020 7:32:52AM

Analysis Method/SOP: SOP.T.40.050 / SOP.T.40.051

Analyte	LOQ	Action Level	Result	Units	Type
Methomyl	0.200	0.4	< LOQ	ppm	Carbamate insecticide
Methyl parathion	0.100	0.2	< LOQ	ppm	
MGK-264	0.100	0.2	< LOQ	ppm	
Myclobutanil	0.100	0.2	< LOQ	ppm	Azole fungicide
Naled	0.250	0.5	< LOQ	ppm	
Oxamyl	0.500	1	< LOQ	ppm	Carbamate insecticide
Paclobutrazol	0.200	0.4	< LOQ	ppm	Azole plant growth regulator
Permethrins	0.100	0.2	< LOQ	ppm	
Phosmet	0.100	0.2	< LOQ	ppm	Organophosphate insecticide
Piperonyl butoxide	1.00	2	< LOQ	ppm	
Prallethrin	0.100	0.2	< LOQ	ppm	
Propiconazole	0.200	0.4	< LOQ	ppm	
Propoxur	0.100	0.2	< LOQ	ppm	Carbamate insecticide
Pyrethrins	0.500	1	< LOQ	ppm	
Pyridaben	0.100	0.2	< LOQ	ppm	Unclassified insecticide
Spinosad	0.100	0.2	< LOQ	ppm	Spinosyn insecticide
Spiromesifen	0.100	0.2	< LOQ	ppm	Keto-enol insecticide
Spirotetramat	0.100	0.2	< LOQ	ppm	Keto-enol insecticide
Spiroxamine	0.200	0.4	< LOQ	ppm	Unclassified fungicide
Tebuconazole	0.200	0.4	< LOQ	ppm	
Thiacloprid	0.100	0.2	< LOQ	ppm	
Thiamethoxam	0.100	0.2	< LOQ	ppm	Neonicotinoid insectide
Trifloxystrobin	0.100	0.2	< LOQ	ppm	Strobin fungicide

Results above the action level fail Oregon state testing requirements and will be highlighted RED.

LOQ= Limit of Quantitation; PPM= Parts per million; ND= Not detected; NT= Not tested; AC= Above calibration range. PASS/FAIL status based on OAR 333-007.



Stephanie Moon
Laboratory Director - 10/15/2020

EVIO Labs Medford (pka Kenevir Research)
 540 East Vilas Road, Suite F, Central Point, OR 97502
 541-668-7444 / OLCC 010-1001626980D / www.EVIOLabs.com

ITLO Holdings Lifter 1020.3.69-2.2 FD

Silver Lining Xtracts LLC

AG-R1049952IHH

Sample ID: M201627-02 METRC Batch #:

Matrix: Extract/Concentrate

Date Sampled: 10/09/20 09:00

Date Accepted: 10/09/20

Batch ID: 1020.3.69-2.2

Batch Size: 37000g

Sampling Method/SOP: SOP.T.20.010

Residual Solvents

Analyte	LOQ	Action Level	Result	Units
Butanes	2500	5000 ³	< LOQ	ppm
n-Butane	1250	5000	< LOQ	ppm
iso-Butane	1250	5000	< LOQ	ppm
Hexanes	145	290 ⁴	< LOQ	ppm
n-Hexane	145	290	< LOQ	ppm
2-Methylpentane	145	290	< LOQ	ppm
3-Methylpentane	145	290	< LOQ	ppm
2,2-Dimethylbutane	145	290	< LOQ	ppm
2,3-Dimethylbutane	145	290	< LOQ	ppm
Pentanes	2500	5000 ⁵	< LOQ	ppm
n-Pentane	833.33	5000	< LOQ	ppm
iso-Pentane	833.33	5000	< LOQ	ppm
Neopentane	833.33	5000	< LOQ	ppm
Xylenes	1085	2170	< LOQ	ppm
1,2-Dimethylbenzene	271.25	2170	< LOQ	ppm
1,3-Dimethylbenzene	271.25	2170	< LOQ	ppm
1,4-Dimethylbenzene	271.25	2170	< LOQ	ppm
Xylenes MP	1085	2170	< LOQ	ppm
Ethyl benzene	271.25	NA	< LOQ	ppm
2-Propanol (IPA)	2500	5000	< LOQ	ppm
Acetone	2500	5000	< LOQ	ppm
Acetonitrile	205	410	< LOQ	ppm
Benzene	1	2	< LOQ	ppm
Methanol	1500	3000	< LOQ	ppm
Propane	2500	5000	< LOQ	ppm
Toluene	445	890	< LOQ	ppm
Dichloromethane	300	600	< LOQ	ppm
1,4-Dioxane	190	380	< LOQ	ppm
2-Butanol	2500	5000	< LOQ	ppm
2-Ethoxyethanol	80	160	< LOQ	ppm
Cumene	35	70	< LOQ	ppm
Cyclohexane	1940	3880	< LOQ	ppm
Ethyl acetate	2500	5000	< LOQ	ppm
Ethyl ether	2500	5000	< LOQ	ppm
Ethylene glycol	310	620	< LOQ	ppm
Ethylene oxide	25	50	< LOQ	ppm
Heptane	2500	5000	< LOQ	ppm
Isopropyl acetate	2500	5000	< LOQ	ppm
Tetrahydrofuran	360	720	< LOQ	ppm

Date/Time Extracted: 10/13/20 12:55

Date/Time Analyzed: 10/13/20 19:55

Analysis Method/SOP: SOP.T.40.031

3 - Total butanes are calculated as sum of n-butanes (CAS# 106-97-8) and iso-butane (CAS# 75-28-5)

4 - Total hexanes are calculated as sum of n-hexane (CAS# 110-54-3), 2-methylpentane (CAS# 107-83-5), 3-methylpentane (CAS# 96-14-0), 2,2-dimethylbutane (CAS# 75-83-2), 2,3-dimethylbutane (CAS# 79-29-8)

5 - Total pentanes are calculated as sum of n-pentane (CAS# 109-66-0), iso-pentane (CAS# 78-78-4), and neo-pentane (CAS# 463-82-1)

6 - Total xylenes are calculated as 1,2-dimethylbenzene (CAS# 95-47-6), 1,3-dimethylbenzene (CAS# 106-42-3), and 1-4-dimethylbenzene (CAS# 106-42-3)

7 - Ethanol is not regulated under OAR-333-007-0410.

Results above the action level fail Oregon state testing requirements and will be highlighted **RED**. LOQ=Limit of Quantitation; PPM=Parts per million; ND=Not detected; NT=Not tested; AC=Above calibration range. PASS/FAIL status based on OAR 333-007. Analysis performed in conjunction with EVIO Labs Portland.



Stephanie Moon
 Laboratory Director - 10/15/2020

EVIO Labs Medford (pka Kenevir Research)
540 East Vilas Road, Suite F, Central Point, OR 97502
541-668-7444 / OLCC 010-1001626980D / www.EVIOLabs.com

Quality Control

Batch: M20J048 - SOP.T.30.050 Prep for Cannabinoids

Blank(M20J048-BLK1)			Extracted: 10/09/20 09:35		Analyzed: 10/10/20 02:47		
Analyte	Result	LOQ	Recovery Limits	Analyte	Result	LOQ	Recovery Limits
THCA	< LOQ	0.100 (%)	< LOQ	delta 9-THC	< LOQ	0.100 (%)	< LOQ
delta 8-THC	< LOQ	0.100 (%)	< LOQ	THCV-A	< LOQ	0.100 (%)	< LOQ
THCV	< LOQ	0.100 (%)	< LOQ	CBDA	< LOQ	0.100 (%)	< LOQ
CBD	< LOQ	0.100 (%)	< LOQ	CBDV-A	< LOQ	0.100 (%)	< LOQ
CBDV	< LOQ	0.100 (%)	< LOQ	CBG	< LOQ	0.100 (%)	< LOQ
CBGA	< LOQ	0.100 (%)	< LOQ	CBN	< LOQ	0.100 (%)	< LOQ
CBCA	< LOQ	0.100 (%)	< LOQ	CBC	< LOQ	0.100 (%)	< LOQ
Sum of tested Cannabinoid:	< LOQ	0.100 (%)	< LOQ				

LCS(M20J048-BS1)			Extracted: 10/09/20 09:35		Analyzed: 10/10/20 03:04		
Analyte	% Recovery	LOQ	Recovery Limits	Analyte	% Recovery	LOQ	Recovery Limits
THCA	95.7	(%)	70-130	delta 9-THC	96.3	(%)	70-130
THCV	99.0	(%)	70-130	CBDA	96.0	(%)	70-130
CBD	96.9	(%)	70-130	CBG	95.6	(%)	70-130
CBGA	95.1	(%)	70-130	CBN	102	(%)	70-130
CBCA	98.7	(%)	70-130	CBC	96.4	(%)	70-130

Batch: M20J052 - SOP.T.30.060 Pesticide Prep

Blank(M20J052-BLK1)			Extracted: 10/09/20 09:42		Analyzed: 10/09/20 17:43		
Analyte	Result	LOQ	Recovery Limits	Analyte	Result	LOQ	Recovery Limits
Methyl parathion	< LOQ	0.100 (ppm)	< LOQ	MGK-264	< LOQ	0.100 (ppm)	< LOQ
Chlorfenapyr	< LOQ	0.500 (ppm)	< LOQ	Cyfluthrin	< LOQ	0.500 (ppm)	< LOQ
Cypermethrin	< LOQ	0.500 (ppm)	< LOQ	Abamectin	< LOQ	0.250 (ppm)	< LOQ
Acephate	< LOQ	0.200 (ppm)	< LOQ	Acequinocyl	< LOQ	1.00 (ppm)	< LOQ
Acetamiprid	< LOQ	0.100 (ppm)	< LOQ	Aldicarb	< LOQ	0.200 (ppm)	< LOQ
Azoxystrobin	< LOQ	0.100 (ppm)	< LOQ	Bifenazate	< LOQ	0.100 (ppm)	< LOQ
Bifenthrin	< LOQ	0.100 (ppm)	< LOQ	Boscalid	< LOQ	0.200 (ppm)	< LOQ
Carbaryl	< LOQ	0.100 (ppm)	< LOQ	Carbofuran	< LOQ	0.100 (ppm)	< LOQ
Chlorantraniliprole	< LOQ	0.100 (ppm)	< LOQ	Chlorpyrifos	< LOQ	0.100 (ppm)	< LOQ
Clofentezine	< LOQ	0.100 (ppm)	< LOQ	Daminozide	< LOQ	0.500 (ppm)	< LOQ
DDVP (Dichlorvos)	< LOQ	0.500 (ppm)	< LOQ	Diazinon	< LOQ	0.100 (ppm)	< LOQ
Dimethoate	< LOQ	0.100 (ppm)	< LOQ	Ethoprophos	< LOQ	0.100 (ppm)	< LOQ
Etofenprox	< LOQ	0.200 (ppm)	< LOQ	Etoxazole	< LOQ	0.100 (ppm)	< LOQ
Fenoxycarb	< LOQ	0.100 (ppm)	< LOQ	Fenpyroximate	< LOQ	0.200 (ppm)	< LOQ
Fipronil	< LOQ	0.200 (ppm)	< LOQ	Flonicamid	< LOQ	0.500 (ppm)	< LOQ
Fludioxonil	< LOQ	0.200 (ppm)	< LOQ	Hexythiazox	< LOQ	0.500 (ppm)	< LOQ
Imazalil	< LOQ	0.100 (ppm)	< LOQ	Imidacloprid	< LOQ	0.200 (ppm)	< LOQ



Stephanie Moon
Laboratory Director - 10/15/2020

EVIO Labs Medford (pka Kenevir Research)
540 East Vilas Road, Suite F, Central Point, OR 97502
541-668-7444 / OLCC 010-1001626980D / www.EVIOLabs.com

Quality Control

Batch: M20J052 - SOP.T.30.060 Pesticide Prep (Continued)

Blank(M20J052-BLK1)			Extracted: 10/09/20 09:42		Analyzed: 10/10/20 02:54		
Analyte	Result	LOQ	Recovery Limits	Analyte	Result	LOQ	Recovery Limits
Kresoxim-methyl	< LOQ	0.200 (ppm)	< LOQ	Malathion	< LOQ	0.100 (ppm)	< LOQ
Metalaxyl	< LOQ	0.100 (ppm)	< LOQ	Methiocarb	< LOQ	0.100 (ppm)	< LOQ
Methomyl	< LOQ	0.200 (ppm)	< LOQ	Myclobutanil	< LOQ	0.100 (ppm)	< LOQ
Naled	< LOQ	0.250 (ppm)	< LOQ	Oxamyl	< LOQ	0.500 (ppm)	< LOQ
Paclobutrazol	< LOQ	0.200 (ppm)	< LOQ	Permethrins	< LOQ	0.100 (ppm)	< LOQ
Phosmet	< LOQ	0.100 (ppm)	< LOQ	Piperonyl butoxide	< LOQ	1.00 (ppm)	< LOQ
Prallethrin	< LOQ	0.100 (ppm)	< LOQ	Propiconazole	< LOQ	0.200 (ppm)	< LOQ
Propoxur	< LOQ	0.100 (ppm)	< LOQ	Pyridaben	< LOQ	0.100 (ppm)	< LOQ
Pyrethrins	< LOQ	0.500 (ppm)	< LOQ	Spinosad	< LOQ	0.100 (ppm)	< LOQ
Spiromesifen	< LOQ	0.100 (ppm)	< LOQ	Spirotetramat	< LOQ	0.100 (ppm)	< LOQ
Spiroxamine	< LOQ	0.200 (ppm)	< LOQ	Tebuconazole	< LOQ	0.200 (ppm)	< LOQ
Thiacloprid	< LOQ	0.100 (ppm)	< LOQ	Thiamethoxam	< LOQ	0.100 (ppm)	< LOQ
Trifloxystrobin	< LOQ	0.100 (ppm)	< LOQ				

LCS(M20J052-BS1)			Extracted: 10/09/20 09:42		Analyzed: 10/09/20 17:16		
Analyte	% Recovery	LOQ	Recovery Limits	Analyte	% Recovery	LOQ	Recovery Limits
Methyl parathion	90.0	0.100 (ppm)	50-150	MGK-264	91.7	0.100 (ppm)	50-150
Chlorfenapyr	99.1	0.500 (ppm)	50-150	Cyfluthrin	143	0.500 (ppm)	50-150
Cypermethrin	153	0.500 (ppm)	50-150	Abamectin	106	0.250 (ppm)	50-150
Acephate	156	0.200 (ppm)	50-150	Acequinocyl	85.6	1.00 (ppm)	50-150
Acetamiprid	73.3	0.100 (ppm)	50-150	Aldicarb	161	0.200 (ppm)	50-150
Azoxystrobin	58.7	0.100 (ppm)	50-150	Bifenazate	86.9	0.100 (ppm)	50-150
Bifenthrin	82.9	0.100 (ppm)	50-150	Boscalid	105	0.200 (ppm)	50-150
Carbaryl	134	0.100 (ppm)	50-150	Carbofuran	57.2	0.100 (ppm)	50-150
Chlorantraniliprole	69.6	0.100 (ppm)	50-150	Chlorpyrifos	110	0.100 (ppm)	50-150
Clofentezine	131	0.100 (ppm)	50-150	Daminozide	154	0.500 (ppm)	50-150
DDVP (Dichlorvos)	107	0.500 (ppm)	50-150	Diazinon	135	0.100 (ppm)	50-150
Dimethoate	163	0.100 (ppm)	50-150	Ethoprophos	90.9	0.100 (ppm)	50-150
Etofenprox	135	0.200 (ppm)	50-150	Etoxazole	74.0	0.100 (ppm)	50-150
Fenoxycarb	77.2	0.100 (ppm)	50-150	Fenpyroximate	108	0.200 (ppm)	50-150
Fipronil	45.7	0.200 (ppm)	50-150	Flonicamid	65.3	0.500 (ppm)	50-150
Fludioxonil	55.1	0.200 (ppm)	50-150	Hexythiazox	62.3	0.500 (ppm)	50-150
Imazalil	82.8	0.100 (ppm)	50-150	Imidacloprid	58.5	0.200 (ppm)	50-150
Kresoxim-methyl	79.3	0.200 (ppm)	50-150	Malathion	164	0.100 (ppm)	50-150
Metalaxyl	88.7	0.100 (ppm)	50-150	Methiocarb	192	0.100 (ppm)	50-150
Methomyl	132	0.200 (ppm)	50-150	Myclobutanil	78.8	0.100 (ppm)	50-150
Naled	161	0.250 (ppm)	50-150	Oxamyl	149	0.500 (ppm)	50-150



Stephanie Moon
Laboratory Director - 10/15/2020

EVIO Labs Medford (pka Kenevir Research)
540 East Vilas Road, Suite F, Central Point, OR 97502
541-668-7444 / OLCC 010-1001626980D / www.EVIOLabs.com

Quality Control

Batch: M20J052 - SOP.T.30.060 Pesticide Prep (Continued)

LCS(M20J052-BS1)			Extracted: 10/09/20 09:42		Analyzed: 10/10/20 03:25		
Analyte	% Recovery	LOQ	Recovery Limits	Analyte	% Recovery	LOQ	Recovery Limits
Paclbutrazol	155	0.200 (ppm)	50-150	Permethrins		0.100 (ppm)	50-150
Phosmet	125	0.100 (ppm)	50-150	Piperonyl butoxide	91.2	1.00 (ppm)	50-150
Prallethrin	103	0.100 (ppm)	50-150	Propiconazole	160	0.200 (ppm)	50-150
Propoxur	85.3	0.100 (ppm)	50-150	Pyridaben	72.4	0.100 (ppm)	50-150
Pyrethrins	224	0.500 (ppm)	50-150	Spinosad	50.8	0.100 (ppm)	50-150
Spiromesifen	111	0.100 (ppm)	50-150	Spirotetramat	113	0.100 (ppm)	50-150
Spiroxamine	157	0.200 (ppm)	50-150	Tebuconazole	155	0.200 (ppm)	50-150
Thiacloprid	211	0.100 (ppm)	50-150	Thiamethoxam	61.3	0.100 (ppm)	50-150
Trifloxystrobin	86.0	0.100 (ppm)	50-150				

Batch: M20J070 - SOP.T.40.031 Solvents

Blank(M20J070-BLK1)			Extracted: 10/13/20 12:55		Analyzed: 10/13/20 16:35		
Analyte	Result	LOQ	Recovery Limits	Analyte	Result	LOQ	Recovery Limits
Butanes	< LOQ	2500 (ppm)	< LOQ	n-Butane	< LOQ	1250 (ppm)	< LOQ
iso-Butane	< LOQ	1250 (ppm)	< LOQ	Hexanes	< LOQ	145 (ppm)	< LOQ
n-Hexane	< LOQ	145 (ppm)	< LOQ	2-Methylpentane	< LOQ	145 (ppm)	< LOQ
3-Methylpentane	< LOQ	145 (ppm)	< LOQ	2,2-Dimethylbutane	< LOQ	145 (ppm)	< LOQ
2,3-Dimethylbutane	< LOQ	145 (ppm)	< LOQ	Pentanes	< LOQ	2500 (ppm)	< LOQ
n-Pentane	< LOQ	833.33 (ppm)	< LOQ	iso-Pentane	< LOQ	833.33 (ppm)	< LOQ
Neopentane	< LOQ	833.33 (ppm)	< LOQ	Xylenes	< LOQ	1085 (ppm)	< LOQ
1,2-Dimethylbenzene	< LOQ	271.25 (ppm)	< LOQ	1,3-Dimethylbenzene	< LOQ	271.25 (ppm)	< LOQ
1,4-Dimethylbenzene	< LOQ	271.25 (ppm)	< LOQ	Xylenes MP	< LOQ	1085 (ppm)	< LOQ
Ethyl benzene	< LOQ	271.25 (ppm)	< LOQ	2-Propanol (IPA)	< LOQ	2500 (ppm)	< LOQ
Acetone	< LOQ	2500 (ppm)	< LOQ	Acetonitrile	< LOQ	205 (ppm)	< LOQ
Benzene	< LOQ	1 (ppm)	< LOQ	Methanol	< LOQ	1500 (ppm)	< LOQ
Propane	< LOQ	2500 (ppm)	< LOQ	Toluene	< LOQ	445 (ppm)	< LOQ
Dichloromethane	< LOQ	300 (ppm)	< LOQ	1,4-Dioxane	< LOQ	190 (ppm)	< LOQ
2-Butanol	< LOQ	2500 (ppm)	< LOQ	2-Ethoxyethanol	< LOQ	80 (ppm)	< LOQ
Cumene	< LOQ	35 (ppm)	< LOQ	Cyclohexane	< LOQ	1940 (ppm)	< LOQ
Ethyl acetate	< LOQ	2500 (ppm)	< LOQ	Ethyl ether	< LOQ	2500 (ppm)	< LOQ
Ethylene glycol	< LOQ	310 (ppm)	< LOQ	Ethylene oxide	< LOQ	25 (ppm)	< LOQ
Heptane	< LOQ	2500 (ppm)	< LOQ	Isopropyl acetate	< LOQ	2500 (ppm)	< LOQ
Tetrahydrofuran	< LOQ	360 (ppm)	< LOQ				

LCS(M20J070-BS1)			Extracted: 10/13/20 12:55		Analyzed: 10/13/20 17:04		
Analyte	% Recovery	LOQ	Recovery Limits	Analyte	% Recovery	LOQ	Recovery Limits
Butanes		2500 (ppm)	0-200	n-Butane	90.8	1250 (ppm)	50-150



Stephanie Moon
Laboratory Director - 10/15/2020

EVIO Labs Medford (pka Kenevir Research)
540 East Vilas Road, Suite F, Central Point, OR 97502
541-668-7444 / OLCC 010-1001626980D / www.EVIOLabs.com

Quality Control

Batch: M20J070 - SOP.T.40.031 Solvents (Continued)

LCS(M20J070-BS1)			Extracted: 10/13/20 12:55		Analyzed: 10/13/20 17:04		
Analyte	% Recovery	LOQ	Recovery Limits	Analyte	% Recovery	LOQ	Recovery Limits
iso-Butane	92.2	1250 (ppm)	50-150	Hexanes		145 (ppm)	0-200
n-Hexane	109	145 (ppm)	70-130	2-Methylpentane	107	145 (ppm)	70-130
3-Methylpentane	115	145 (ppm)	70-130	2,2-Dimethylbutane	110	145 (ppm)	70-130
2,3-Dimethylbutane	105	145 (ppm)	70-130	Pentanes		2500 (ppm)	0-200
n-Pentane	94.8	833.33 (ppm)	70-130	iso-Pentane	90.1	833.33 (ppm)	70-130
Neopentane	99.6	833.33 (ppm)	50-150	Xylenes		1085 (ppm)	0-200
1,2-Dimethylbenzene	85.5	271.25 (ppm)	70-130	1,3-Dimethylbenzene	86.0	271.25 (ppm)	70-130
1,4-Dimethylbenzene	86.6	271.25 (ppm)	70-130	Xylenes MP		1085 (ppm)	0-200
Ethyl benzene	77.5	271.25 (ppm)	70-130	2-Propanol (IPA)	91.9	2500 (ppm)	70-130
Acetone	103	2500 (ppm)	70-130	Acetonitrile	97.6	205 (ppm)	70-130
Benzene	86.1	1 (ppm)	70-130	Methanol	105	1500 (ppm)	70-130
Propane	108	2500 (ppm)	50-150	Toluene	90.6	445 (ppm)	70-130
Dichloromethane	107	300 (ppm)	70-130	1,4-Dioxane	98.0	190 (ppm)	70-130
2-Butanol	103	2500 (ppm)	70-130	2-Ethoxyethanol	83.7	80 (ppm)	70-130
Cumene	93.1	35 (ppm)	50-150	Cyclohexane	87.2	1940 (ppm)	70-130
Ethyl acetate	96.6	2500 (ppm)	70-130	Ethyl ether	89.7	2500 (ppm)	70-130
Ethylene glycol	96.0	310 (ppm)	70-130	Ethylene oxide	109	25 (ppm)	50-150
Heptane	93.2	2500 (ppm)	70-130	Isopropyl acetate	99.7	2500 (ppm)	70-130
Tetrahydrofuran	110	360 (ppm)	70-130				

Batch: P20J052 - SOP.T.40.092 PDX Terpenoid Analysis via GC-MS

Blank(P20J052-BLK1)			Extracted: 10/13/20 15:44		Analyzed: 10/14/20 09:27		
Analyte	Result	LOQ	Recovery Limits	Analyte	Result	LOQ	Recovery Limits
alpha-Pinene	< LOQ	0.200 (mg/g)	< LOQ	beta-Pinene	< LOQ	0.200 (mg/g)	< LOQ
Camphene	< LOQ	0.200 (mg/g)	< LOQ	Sabinene	< LOQ	0.200 (mg/g)	< LOQ
Sabinene hydrate	< LOQ	0.200 (mg/g)	< LOQ	beta-Myrcene	< LOQ	0.200 (mg/g)	< LOQ
p-Mentha-1,5-diene	< LOQ	0.200 (mg/g)	< LOQ	(+)-3-Carene	< LOQ	0.200 (mg/g)	< LOQ
alpha-Terpinene	< LOQ	0.200 (mg/g)	< LOQ	gamma-Terpinene	< LOQ	0.200 (mg/g)	< LOQ
Limonene	< LOQ	0.200 (mg/g)	< LOQ	Eucalyptol	< LOQ	0.200 (mg/g)	< LOQ
Guaiol	< LOQ	0.200 (mg/g)	< LOQ	Terpinolene	< LOQ	0.200 (mg/g)	< LOQ
Linalool	< LOQ	0.200 (mg/g)	< LOQ	Camphor	< LOQ	0.200 (mg/g)	< LOQ
(+)-Camphor	< LOQ	0.200 (mg/g)	< LOQ	(-)-Camphor	< LOQ	0.200 (mg/g)	< LOQ
Isopulegol	< LOQ	0.200 (mg/g)	< LOQ	Isoborneol	< LOQ	0.200 (mg/g)	< LOQ
Borneol	< LOQ	0.200 (mg/g)	< LOQ	Hexahydrothymol	< LOQ	0.200 (mg/g)	< LOQ
Geraniol	< LOQ	0.200 (mg/g)	< LOQ	(+)-Pulegone	< LOQ	0.200 (mg/g)	< LOQ
Nerol	< LOQ	0.200 (mg/g)	< LOQ	cis-Nerolidol	< LOQ	0.200 (mg/g)	< LOQ
trans-Nerolidol	< LOQ	0.200 (mg/g)	< LOQ	Geranyl acetate	< LOQ	0.200 (mg/g)	< LOQ



Stephanie Moon
Laboratory Director - 10/15/2020

Page 9 of 10

EVIO Labs Medford (pka Kenevir Research)
 540 East Vilas Road, Suite F, Central Point, OR 97502
 541-668-7444 / OLCC 010-1001626980D / www.EVIOLabs.com

Quality Control

Batch: P20J052 - SOP.T.40.092 PDX Terpenoid Analysis via GC-MS (Continued)

Blank(P20J052-BLK1)			Extracted: 10/13/20 15:44		Analyzed: 10/14/20 09:27		
Analyte	Result	LOQ	Recovery Limits	Analyte	Result	LOQ	Recovery Limits
alpha-Cedrene	< LOQ	0.200 (mg/g)	< LOQ	trans-Caryophyllene	< LOQ	0.200 (mg/g)	< LOQ
Caryophyllene Oxide	< LOQ	0.200 (mg/g)	< LOQ	alpha-Humulene	< LOQ	0.200 (mg/g)	< LOQ
Valencene	< LOQ	0.200 (mg/g)	< LOQ	alpha-Farnesene	< LOQ	0.200 (mg/g)	< LOQ
beta-Farnesene	< LOQ	0.200 (mg/g)	< LOQ	Cedrol	< LOQ	0.200 (mg/g)	< LOQ
alpha-Bisabolol	< LOQ	0.200 (mg/g)	< LOQ	Fenchone	< LOQ	0.200 (mg/g)	< LOQ
Fenchyl Alcohol	< LOQ	0.200 (mg/g)	< LOQ	trans, beta- Ocimene	< LOQ	0.200 (mg/g)	< LOQ
beta, cis- Ocimene	< LOQ	0.200 (mg/g)	< LOQ	Terpineol	< LOQ	0.200 (mg/g)	< LOQ



Stephanie Moon
 Laboratory Director - 10/15/2020

Silver Lining Xtracts LLC
thomas@focushempco.com
 (541)887-0174
 Lic. # AG-R1049952IHH

KR Order: M201627-01_02

METRC Batch #: N/A

Batch#: 1020.3.69-2.2; Batch Size: 37000g

Ordered: 10/09/2020; Sampled: 10/09/2020; Completed: 10/15/2020

Sample collection: OAR 333-064-100

Batch samples: Cannabinoid Potency Analysis
OAR 333-007-0430 Potency

Sample	EVIO Lab ID	Total THC (mg/g)	Total CBD (mg/g)	CBGA (mg/g)	CBG (mg/g)	THCV-A (mg/g)	THCV (mg/g)	CBDV-A (mg/g)	CBDV (mg/g)	CBC-A (mg/g)	CBC (mg/g)	Δ8 THC (mg/g)	CBN (mg/g)
ITLO Holdings Lifter 1020.3.69-2.2	M201627-01	25.20	697.00	<LOQ	14.90	<LOQ	<LOQ	<LOQ	4.19	<LOQ	30.40	<LOQ	<LOQ
ITLO Holdings Lifter 1020.3.69-2.2 FD	M201627-02	25.30	697.00	<LOQ	14.80	<LOQ	<LOQ	<LOQ	4.23	<LOQ	30.40	<LOQ	<LOQ
Average		25.25	697.00	<LOQ	14.85	<LOQ	<LOQ	<LOQ	4.21	<LOQ	30.40	<LOQ	<LOQ
RPD		0.40%	0.00%	N/A	0.67%	N/A	N/A	N/A	0.95%	N/A	0.00%	N/A	N/A
Total THC RPD:		PASS											

Potency Analytical Batch ID : M20J048

Notes: Total THC = THCa x 0.877 + D9-THC; Total CBD = CBDa x 0.877 + CBD. Cannabinoid method: HPLC-UV, SOP.T.40.020; LCS recoveries for all analytes 70 – 130%; Replicate recoveries <20% RSD; Sample and solvent blanks <LOQ (or ND); LOQ = Limit of Quantitation; NA = Not Applicable.

References: Kenevir Research lab reports

2010KR0079.5307 & 2010R0079.5308


 540 E. Vilas Rd., Suite F
 Central Point, OR 97502
www.kenevirresearch.com
 541.668.7444



 Stephanie Moon
 Lab Director

This report shall not be reproduced, unless in its entirety, without written approval from EVIO Labs, Inc., and Kenevir Research. This report is a Kenevir Research certification. The results relate only to the material or product analyzed. Test results are confidential unless explicitly waived otherwise. Void after 1 year from test end date. Cannabinoid content of batch material may vary depending on sampling error. Sampling method: EVIO-SOP-018; ORELAP-SOP-002.



Mycotoxin Analysis Report

R&D Use only. Not for Compliance

**Silver Linings
Xtracts LLC**

636 W Dutton Rd
Eagle Point, OR 97524
541-887-0174
thomas@focushemp.com

EVIO Sample ID: M201627-01

Product Name: ITLO Holdings Lifter 1020.3.69-2.2
Batch#: 1020.3.69-2.2; Batch Size: 37000g; Unit size: N/A
Ordered: 10/09/2020; Sampled: 10/09/2020; Completed: 10/15/2020

Mycotoxin Analysis

EVIO Sample ID: M201627-01

Product Name: ITLO Holdings Lifter 1020.3.69-2.2

Analyte	LOQ (ug/mL)	Results (ug/mL)
Aflatoxin B1	0.025	<LOQ
Aflatoxin B2	0.025	<LOQ
Aflatoxin G1	0.025	<LOQ
Aflatoxin G2	0.025	<LOQ
Ochratoxin A	0.100	<LOQ

Mycotoxin Analytical Batch ID : M20J048

Notes: LCS recoveries for all analytes 70 – 130%; Replicate recoveries <20% RSD; Sample and solvent blanks <LOQ (or ND); LOQ = Limit of Quantitation; NA = Not Applicable.

References: Kenevir Research lab reports

2010KR00079.5307



540 E. Vilas Rd., Suite F
Central Point, OR 97502
www.eviolabs.com
541.668.7444

Stephanie Moon
Lab Director

This report shall not be reproduced, unless in its entirety, without written approval from EVIO Labs, Inc., and Kenevir Research. This report is a Kenevir Research certification. The results relate only to the material or product analyzed. Test results are confidential unless explicitly waived otherwise. Mycotoxin content of batch material may vary depending on sampling error. Sampling method: EVIO-SOP-018; ORELAP-SOP-002. This assay is not ORELAP or ISO 17025 accredited.